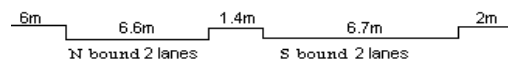
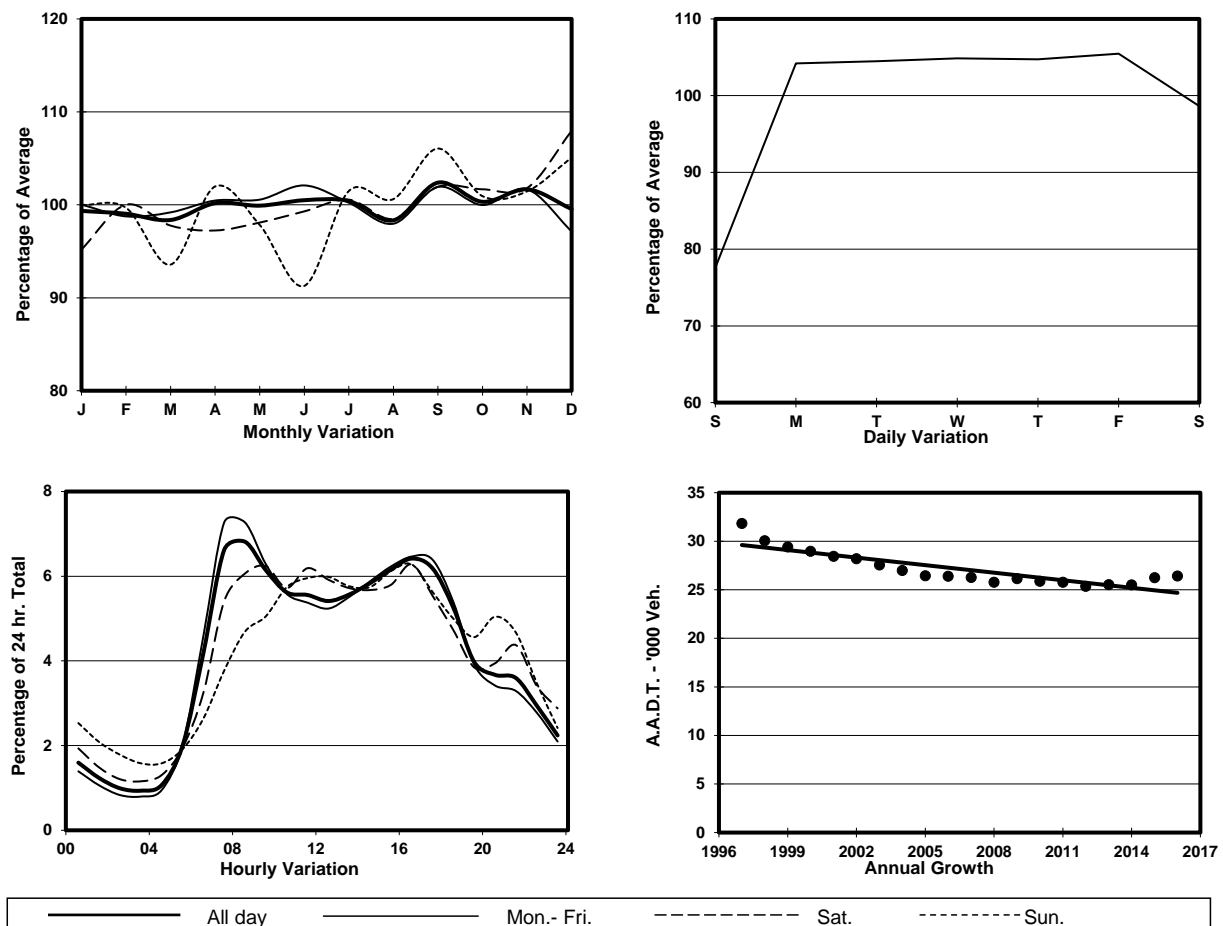


YEAR

2016

LINK CASTLE PEAK RD - KWAI CHUNG (from TAI WO INT to
WO YI HOP RD)CORE STATION
ROAD NETWORK
ROAD TYPE5004
MAJOR
PRIMARY DISTRIBUTOR

1. TRAFFIC FLOW VARIATION AND GROWTH



2. TRAFFIC CHARACTERISTICS (BY DIRECTION)

Parameter	All - Day	Mon. - Fri.	Sat.	Sun.
SOUTH BOUND				
A.A.D.T.	12500	13140	12600	10220
R 12 / 24 - %	69.8	71.1	67.4	64.7
R 16 / 24 - %	84.9	85.4	84	82.8
AM Peak Hour	0700-0800	0700-0800	0900-1000	0900-1000
One-way flow at AM peak hour	870	1010	760	480
T - % (AM)	-	-	-	-
PM Peak Hour	1700-1800	1700-1800	1600-1700	1600-1700
One-way flow at PM peak hour	780	860	740	630
T - % (PM)	-	-	-	-
Prop.of commercial vehicles - 16 hr.	-	-	-	-
NORTH BOUND				
A.A.D.T.	13910	14870	13800	10480
R 12 / 24 - %	73.2	74.5	71	66.8
R 16 / 24 - %	86.6	87.1	85.7	84.1
AM Peak Hour	0800-0900	0800-0900	0900-1000	0900-1000
One-way flow at AM peak hour	970	1100	890	570
T - % (AM)	-	-	-	-
PM Peak Hour	1600-1700	1600-1700	1600-1700	1600-1700
One-way flow at PM peak hour	940	1010	920	670
T - % (PM)	-	-	-	-
Prop.of commercial vehicles - 16 hr.	-	-	-	-

3. OTHER INFORMATION AND COMMENT